



OCTOBER 2024

Plantings and possums at Paparoa School

Tēnā koutou katoa,
I write this month's article sitting in front of the fire with a wind chill factor of below 10 degrees outside. Reminds me of the days living in Tokoroa but I am pleased to see that it isn't going to last too long. Since last month's article we have managed to complete the planting of our native corridor in our bottom paddock. All of our tamariki took part in this activity, loving the fact that they could get really muddy! On a good note, they found plenty of worms so the plants should be good to go.

We held our annual Possum Purge fundraiser on the weekend of the 6th-8th of September with another huge number of possums brought in out of our native environment. This year the total possums were 1658, only 150 shy of the biggest ever total. Such a huge achievement by all the hunters and our team in the sheds who had to pluck them all. A five day mammoth journey!

We also held the Gala on the Sunday which allows the wider community to come and enjoy some awesome



food, play some games, buy raffles and chat. We had the prizegiving in the afternoon, with 'Fur Real' from Ruawai taking out the top prize of 398 possums. Congratulations to all the winners! The Paparoa School BOT, Staff and students can't thank all participants, sponsors and helpers enough for supporting the school in this annual event. Proceeds will go towards enhancing the school environment and providing memorable experiences for our tamariki.

Our new set of calves have been bought and we are currently waiting for them to arrive at school. I will introduce you all to them in the next Paparoa Press edition. We have gone for six this year, I know, crazy right? But at least this gives a lot more of

our tamariki a chance to have a go at rearing a calf for our Pet & Show Day



at the end of October - they are very excited!

Hei konā rā, tēnā koutou katoa.

Karyn Taylor
Principal



INSIDE

- The Future of The Den 3
- Council Mark 5
- At the Market 6
- Letters From the Old PO 7
- Books & Bookclubs 10
- Watch Out For Bittern! 11
- August in the Garden 17
- What's On 18
- Community Directory 19
- Tides 19

Paparoa Press PP

PUBLISHED MONTHLY BY
Progressive Paparoa Inc. (PPI),
for Paparoa, Pahi, Matakoho,
Whakapirau and Tinopai.

CIRCULATION 1,050

CONTACT US:

- press@paparoa.org.nz
- PPI, PO Box 107, Paparoa 0543
- www.paparoa.org.nz

ADVERTISING

Rate Card available by email
Booking & Copy deadline:
15th of month
Publication date 1st Wed of month

A load of rubbish

It doesn't matter where you live in NZ, we have designated days when our rubbish is collected. Kaipara, despite what you see, is no exception.

I'm going to explain this like I'm speaking to a child as it seems it's far too difficult for many to get their heads around.

In Paparoa, Pahi, Wairere, Mareretu, Taipuha, Huarau, Marohemo, Whakapirau and Maunagaturoto, rubbish day is Wednesday.

In Matakoho, Ararua, Parahi, Oparakau, Hukatere,

Arapaoa and Tinopai, rubbish day is Tuesday.

Your rubbish and recycling is collected by Kaipara Refuse, a private company contracted by KDC, and needs to be in the correct bags – BLUE for rubbish and YELLOW for recycling.

You need to have your bags at the nearest collection point or at the kerb, if you are lucky enough to have kerbside collection, by 8am on collection day. If you get to the collection point and the pile of bags has gone it means you have missed the truck. DON'T leave them there - take them home and get there in time next week.

We also have a huge problem of almost no rural rubbish pick-up points. People living on the edges of the KDC boundaries are up to 20km from their nearest point. It's not good enough and only encourages poor behaviours. Contact KDC and ask why you don't have a collection point near where you live.

Don't drop your rubbish bags the day after rubbish day, or any other day as they get ripped open by animals and birds and your rubbish ends up all over the place. Someone has to clean the stinking mess up – and it's not their job. This mainly happens because people throw food scraps in the rubbish. This should be fed to animals, composted, or buried.

Over half of our waste to landfill is food scraps and garden waste which gives off methane as it decomposes in the anaerobic conditions in landfills. It also means you're paying for more rubbish bags that you need to - so save yourself some money and just stop it.

Don't put your rubbish out in black bags as it won't be collected. And don't dump general rubbish that you're too lazy to take to the transfer station. It's pretty simple really.

PP



COLOUR & CUTZ

Ladies & mens cuts
Colours & highlights
Weddings
Gift vouchers

All colours & products used at the salon are organic

Salon 09 431 7255 Gaylene 021 115 8506

OPEN TUESDAY - SATURDAY
1994 PAPAROA VALLEY ROAD

KAIPARA PLUMBING LTD



**DRAINAGE
YOUR LOCAL
PLUMBING
SPECIALISTS**

**ALL
GENERAL
PLUMBING
AND
MAINTENANCE**

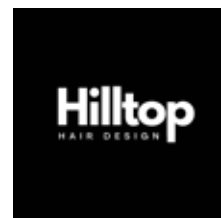


**Master
Plumbers**
Representing Excellence

PH GRAHAM
027 244 5430

Hilltop Hair Design Open for business!

Conveniently located on Paparoa-Oakleigh Rd, with plenty of off street parking and lovely rural views. It's been a long road to the top (as they say) but all the hard work has been worth it. Tina Smith has created a welcoming space for clients to take a break while she works her magic on their hair. She looks forward to welcoming you. Ph 0210 633 674 for appointments.



The future of The Den

To the people of Maungaturoto, the old Otamatea area, and Northland.

The Den, under the leadership of Albie and a few volunteers, needs to be put on a more stable footing. Albie, who at the moment is the sole trader, is feeling his age and health issues are taking their toll.

The Den has become a major player in the funding for Health and Wellbeing of organisations locally and Northland. It would be a shame to see it crumble for the want of a stable foundation.

Albie proposes that an Incorporated Society be formed as a foundation. He and a local accountant Justin Moore, a partner in Sudbury Accountants in Whangarei, are working on a constitution that will keep very close to its present aims.

It is proposed to call a Public Meeting to form the Inc. Soc. and elect a committee to administer it on Sunday the 13th October at 1.30 at the Maungaturoto Country Club. Everybody interested is welcome to attend and have their input.

To form an Inc. Soc. we will need a paid up Membership of a minimum of 10 members. It is proposed that a \$5 membership fee be paid and all office holders and

those wanting to vote on the day should be paid up as a show of goodwill.

Organisations who have benefited from The Den include Maungaturoto Dementia Unit, Northland Emergency Services Trust (NEST), North Kaipara Coast Guard, North Haven Hospice, Ruawai Lions (Hart Walker for a young member of the Community), North Kaipara Show (First Aid cover for show day), Maungaturoto Motocross Club (First Aid cover for their major events including Northland Championships), Maungaturoto St John (Bone Injector for the local ambulance for pain relief), Maungaturoto Fire Brigade (for special fittings that will fit local water trucks when needed at fires etc.) Paparoa Lions (help with events caravan). As well as Northland Breast Cancer Support Trust (which receives no outside funding). This is a group who support and help women going through

a most traumatic and painful experience. Plus other assistance to small groups (help with equipment and goods). Overall this adds up to well over \$500,000 over the last six or seven years.

Further enquiries and information from Albie Paton 0274949448

Paparoa Print Shop

**At Skelton's
Paparoa Drapery
431 7306**



**paparoaprint@gmail.com
all your printing needs**

Roger Price 09 431 4590

Mechanical Services

Lifestyle Autos

Mobile Mechanic

School Holidays

**29 September - 13 October
Term 4 starts 14 October**

**Look out for kids where you might not
usually expect them.**

A reminder to our contributors!

We need all advertising material by the 15th of the previous month and all editorial copy by the 20th. We cannot guarantee the publication of any material received after these dates.

While we always welcome editorial content we reserve the right to decline or hold over any articles outside our regular columns.

Opinions expressed in Paparoa Press are the author's own and not necessarily those of the editorial team or PPI.



DEZINACOMP

Phone : 027 277 3943 or 09 431 6890

Email : julian@dezinacomp.co.nz

**Need any help with your computer
issues. I can help with computers,
Laptops, Printers, scanners etc...**

**If I can't do it.
It's FREE**

**Julian Brown
Service Engineer**

L1/1980 Paparoa Valley Road

Paparoa

do you need a
WEBSITE ?

Local, friendly
website design
& management.
sme-sitedesign.co.nz

Contact Paul for more information:
E: paul@sme-sitedesign.co.nz
T: 09 431-7063
M: 022 625-4156

Get More Customers
Cost Effective Marketing

Paparoa Selwyn Centre

At the time of going to press it is supposed to be Spring, but one could be forgiven for thinking we were suddenly plunged back into Winter.

However, there is always a warm and cheerful welcome at the weekly social mornings for Seniors, hosted by the Selwyn Centre. Come along and loosen up with some gentle DVD exercises for 20 minutes, before indulging in a generous morning tea (to assist with the provision of which a small cost of \$2 is requested).

Then follow various fun activities, including quizzes, games, reminiscing, relating of stories and the occasional singalong or interesting speaker.

Venue: St Mark's Anglican church foyer, Hook Road.
Time: Thursdays from 9.45am.

Contact: Sue 431-6224 or 027 417 4626



Selwyn Centre Christmas party 2024

TR ENGINEERING SERVICES

turning/milling/welding/fabrication

☎ 021 0664 338

✉ trengineer232@gmail.com



4 Hook Rd
Paparoa
Northland
phone
Sam Turner
022 317 1507

Paparoa Community Church

Connecting with God
Creating Community
Communicating the
Gospel



Church Service on Sunday at 10 30am
6pm for fellowship, prayer and sharing.
Everyone Welcome

Keeping on keeping on



We've been in operation for coming up to 10 years - and our success only grows - no mean feat considering we've been forced to re-locate three times! Our current

location in Matakohē suits us, and hopefully the community, very well indeed, and our visitors love both the gallery space and the unique, local work exhibited there. We're open 7 days, 10 'til 4, come and visit - opposite the Gumdigger's Cafe.

More workshops planned

We plan to bring further workshops to the community at subsidised cost. In the pipeline ... a summer painting workshop in February '25 at the Ruawai Art Studio - a great venue for workshops - lots of fun combined with artistic challenge. Watch this space for other workshops, mosaics or clay work, perhaps decoupage? We would welcome your ideas. White Rock has been gifted an electric kiln for firing clay. We need a home for it where we can offer it for the use of creatives, please let us know if you have any ideas.

Why not join us?

White Rock would welcome you and your work. Are you a Kaipara resident artist or artisan who would like to exhibit & sell your work? We're a 'volunteer collective', so two 3-hour shifts each month managing the gallery desk are part of the commitment on joining. Call Susan 021 265 4067 or Stu 021 975 314.

When I haven't any blue I use red (Pablo Picasso).

Left: White Rock artist Ruth Webb shows us Barbara Lee's fabulous NZ birds Cot Quilt.



White Rock Gallery Committee



Council Mark says– Thanks for the feedback

We had a presentation about the independent Annual Residents' Opinion Survey at a recent council briefing session. The survey revealed that overall satisfaction had improved since the previous year although was still lower than at any time of the previous term of council. The survey also identified an emerging trend of polarisation of views-nearly a third scored the "Performance of Elected Members" as poor or very poor, while about a quarter viewed it as excellent.

The results for the Otamatea ward were quite positive, which pleases yet surprises me; I completely understand the frustration people have with the state of our roads and footpaths in particular. I must say that the new roading contractors seem to be making all the right noises and putting in place the right plans to give us best value for money. I will be watching with interest. If a recent Paparoa quiz night is any indication, you probably aren't aware that there are actually two councillors for the Otamatea ward; it isn't all down to me.

One of the conclusions of the survey was that the biggest driver of overall performance is "Image and Reputation", and that the greatest opportunity remains with the performance of elected members. This is related to the trend of polarisation which had been identified. In response to a question from me the presenter of the survey agreed that if the polarisation trend is reversed and we work on being a more inclusive council then perceptions of the performance of council could improve. In my opinion our handling of the Maori ward issue is an example of polarisation; taking the referendum option would have been an inclusive approach - and lots cheaper. Lots cheaper. Look on the council website for the Annual Residents Survey if you want to read the full report.

Our August monthly meeting was a hoot. Among other items, staff put up a regional accessibility strategy for adoption. It has already been adopted by the other three councils in Northland. But not your council. The Mayor altered the recommendation from "adopt" to "note", in other words to thank staff for their work and have a nice day. I am not the person to ask for justification of that decision as I cannot fathom it. The Lifestyler reported me as saying: "If we don't adopt this, it raises questions about the degree of disability around this table". Let me be clear - I would not like people with disabilities to consider themselves being compared unfavourably with elected members of your council, quite the contrary. Opportunity for inclusion passed up.

Unless you were living under a rock you will have heard that the Maori King died recently. We had a council meeting in the week following his death. One of my colleagues suggested at the start of the meeting that we take a few moments to reflect on his passing. The Mayor refused to allow this because it wasn't on the agenda. Obviously the King should have given the council five working days' notice of his impending demise. Opportunity for inclusion passed up? I will however commend the mayor for subsequently committing to put this right at our next meeting.

If you have an opportunity

to do something good today, please don't pass it up.

Mark Vincent
Otamatea Ward Councillor
021 0829 8037

Disclaimer: These are my words, not KDC's.

DIGGER FOR HIRE

2.5 Ton

ON TRAILER AND INCLUDES:
TILT BUCKET, DIGGING BUCKET AND
SPADE BUCKET

HOURLY RATE \$40

Pick up in Paparoa or we can deliver for
small charge

Ph 021677265

TINOPAI PLASTERERS

WE GUARANTEE THE HIGHEST QUALITY FINISH



35 Years experience in...

- GIB Stopping
- Fibrous Plastering

for FREE quote, call us now!
Trevor 021 0300 073



PAPAROA FARMERS' MARKET

EVERY SATURDAY
THE VILLAGE GREEN 9-12

Market Manager
Alistair Gordon
027 52 54 782

The Paparoa Press is
also available online at
paparoa.org.nz

At the market

Within days of moving to Paparoa in 2015, Ruth Mason and Mark Veale were at the weekly Farmers' market selling Chapel Olive Oil. They had just purchased the olive grove on the Petley Rd peninsula from Barry and Verity Baines, who sold at the Farmers' market, and this was the perfect way to get to meet some locals.

Since then Ruth has been a regular stallholder, including a couple of years when she was the co-manager of the market.

Unfortunately cyclone Gabrielle took a heavy toll on the olive crop in 2023, so Ruth took a year off the market while the trees recovered and while family members recovered from various ailments as well. She is now back as a regular stallholder selling her new season extra virgin olive oil along with olive oils infused with organic concentrates.

Ruth has noted that this year's oil is a bit milder in flavour than previous years, most likely because we didn't have so many intensely hot days over last summer. She is looking forward to a hotter summer this year, although as a farmer as well, some summer rain is also welcome!

Ruth and Mark both lead very busy lives, with Ruth working as a vet nurse at Ruawai and Mark working five weeks out of ten based out of Bahrain.

As well as their olive grove they are kept busy looking after a menagerie of animals and birdlife on their block. Spoonbills and even a white heron are frequent visitors to their pond where they are greeted by a mix of wild and domesticated ducks and geese.

Ruth has always tried to support other local producers in the area and, alongside her oils, she will often have a range of tamarillo products



from Maungatapere. She is also currently showcasing Ester Thomas's range of jewellery, as Ester has moved into the Retirement Village in Maungaturoto.

Check out Ruth's delicious, healthy and locally grown olive oil next time you are at the market.

Pete

Telehealth service Ka Ora Telecare

New after-hours telehealth service Ka Ora Telecare is now available for our rural communities

If you're in a rural area, call 0800 2 KA ORA (0800 252 672) to access, or you can be referred by your usual healthcare provider.

This service will improve access to primary health care for almost 900,000 New Zealanders.

The service is available from 5pm - 8am on weekdays and 24 hours a day on weekends and public holidays.

Staffed by kaiāwhina, nurses, GPs and emergency medicine specialists, the service is open to all rural areas whether they're enrolled with a primary care practice or not.

PP

GREAT BED DEALS

FREE LOCAL DELIVERY ON SELECTED PRODUCTS

\$2 MATTRESS WITH M5 ADJUSTABLE BASE

10 Yr Ltd Warranty

Starting at: **\$2190**



\$2 POCKET SPRING MATTRESS AND BASE SET

Starting at: **\$779**



Pillows | Mattresses | Bedroom furniture |
Linen | Adjustable beds | Bases

**BEDS & MORE
FACTORY OUTLET**

22 Freyberg Road, Ruawai
09 699 4050
ruawai@bedsandmore.nz

Letters from The Old Post Office...

Happy days

If you want to change the future, you must change what you're doing in the present...¹ Or feudalism(neo) here we come.

And so Dear Reader, the world turns. As the dark clouds shroud the sun yet again and the bitter wind picks up it seems the ideal opportunity to write something cheerful. Or not.

The topic du jour, indeed for the foreseeable future is, yes, you guessed it, the growing feudalisation of our society. Indeed, Dear Reader, this may well be the time to turn the page or at least pour a large glass of some alcoholic beverage, while you can still afford it. Although, the lucky trampler of fresh picked grapes may still find a trickle to lick in future. Of course, this task is probably already outsourced to some robotic implement. Thought, does grape juice rust moving parts or the reverse at possibly ill-advised moments??

This trend towards feudalism "has been most pronounced in the economy, where income growth has skewed dramatically towards the ultra-rich, creating a ruling financial and now tech oligarchy. This is a global phenomenon: Starting in the 1970s, upward mobility for middle and working classes across all advanced economies began to stall, while the prospects for the upper classes rose dramatically... and a new oligarchy. Fewer than 100 billionaires now own as much as 50 percent of the world's assets, the same amount that around 400 billionaires owned a little more than five years ago"². Yippee!

And Dear Reader, for those of you familiar with Orwell, just consider the words of McKenzie Wark, "Drawing from libertarian economist Tyler Cowen's emphasis on the permanence of extreme inequality in the global, automated economy, the conservative geographer Joel Kotkin envisions the US future as mass serfdom. A property-less underclass will survive by servicing the needs of high earners as personal assistants, trainers, child-minders, cooks, cleaners, et cetera..."³

Thus Dear Reader, as the

night draws in, gather ye rosebuds as ye may and sing a rousing verse or two of L. Cohen's

"Everybody knows that the dice are loaded

Everybody rolls with their fingers crossed

Everybody knows that the war is over

Everybody knows the good guys lost

Everybody knows the fight was fixed

The poor stay poor, the rich get rich

That's how it goes...."

I am off to plant more grapes in the vain hope that there may be some cheer still available. However, I do hope that this brief analysis has added a certain gloss to your day. Just think I could have finished with some of "end of days" Sylvia Plath's poetry. Aren't you the lucky ones.

PS: Of course, one can buy local and ensure that as little money as possible neither goes offshore, nor to big corporations. Think banks, chain stores, online shopping.....

PS: Of course, one can buy local and ensure that as little money as possible neither goes offshore, nor to big corporations.

PPS: Oh, and did I mention fascism? Perhaps another day.

1. Mark Twain

2. <https://www.nypost.com/2019/12/25/how-america-is-reverting-back-to-the-feudal-age/>

3. <https://lareviewofbooks.org/article/neofeudalism-the-end-of-capitalism/>

The dominant social system in medieval Europe, in which the nobility held lands from the Crown in exchange for military service, and vassals were in turn tenants of the nobles, while the

peasants (villeins or serfs) were obliged to live on their lord's land and give him homage, labour, and a share of the produce, notionally in exchange for military protection. Oxford dictionary.

Deb



Birt & Currie Surveyors Ltd



Local Phone
09 280-9591

**Timely,
friendly &
personal
service**

info@landsurveyors.co.nz
www.landsurveyors.co.nz
PO Box 120 Paparoa 0543

THE KAURI MUSEUM

**Guardians of the kauri story
Past, present, future**

Museum open 7 days 9am-5pm

We are very excited to have opened a spectacular new attraction at the Museum - the Forest Walkway.

Come and see it for yourself!

Gumdiggers cafe: open 10am-3pm

5 Church Road, Matakohē ph 09 4317 417 www.kaurimuseum.com

KAIPARA LANDSCAPE

**2 Blakey Road
Maungaturoto**



**Landscape and Garden supplies,
garden ornaments, firewood,
digger hire, pots
0800 769 843**

Keith the TV Guy

Freeview digital TV



21 TV and 9 Radio/Music channels are currently being transmitted.

Satellite dishes, decoders, cable etc., supplied and installed.

phone Keith
021 239 4251

Maungaturoto and Districts Rotary



President Tim arrived at his first meeting with some suggestions for moving forward. He wants us to actively look for avenues where we can support other community groups by helping with manpower. We do have a couple of ideas for the next two months which we will implement and hopefully other projects will come to the fore.

Just a heads up- applications are now open for the Rotary President's Scholarship. This is worth \$1500 and is aimed at any young person aiming for tertiary education. They do not need to be school leavers. Application forms are available at Otamatea High school. However, if you would like one emailed to you, please text me your email address and I will ensure that you get one. (021 142 0357). Applications close on the 5th November.

We continue to work in with Otamatea High School's driving programme. As we can, we provide 12 free lessons to Learners who are aiming for their Restricted Licence. Drivers

have a choice of using their own or our car for the test. We also make our car available so that the practical part of the Defensive Driving course that the school runs, can be completed.

We have recently had a walk around Nikau Grove in Whaka Street. We have a small amount of tidying up to do in this area, but that is weather dependent. This is a pretty patch of native bush with a magnificent kauri tree at the beginning. Even with the wet weather we have had, the path is not too slippery, but best to wear solid footwear because of dampness. We are also going to see how Piroa Falls (Gorge Road) have fared over the winter. Even though this project was initiated by our Rotary Club, in recent years, DOC have taken more responsibility for the maintenance. However, with their cutback in funding, we do not want to see this little gem deteriorate.

An early notice, the Senior's afternoon tea will take place at the Centennial Hall on Friday 15th November. Once again we will be treated by the singers trained by Maura Flower. We will be in touch with you early in November so we can ascertain numbers attending.

Eileen

BRYCE

THE LOCKSMITH LTD

Master Locksmith

Bryce Frewin
Paparoa

Ph: 021 850 983



bryce@brycethelocksmith.co.nz
www.brycethelocksmith.co.nz

YOUR TYRE SPECIALIST

Providing 60 years of service
in the heart of Kaipara.

- Tyres
- WOF
- Servicing
- Brakes
- Suspension
- Alignment
- Wheel Balancing
- Batteries

Garnetts Tyre Service

- 📍 2 Gorge Rd, Maungaturoto
- ☎ 09 431 8255

BRIDGESTONE TYRE CENTRE

Maungaturoto Swim Club and Kaiwaka Athletic Club

Both these clubs have been in recess in recent years. Thank you to those of you who have got in touch with us, showing an interest in one or the other. If you are interested in helping us with either of these clubs, please email me at: eileen.parsons16@gmail.com and I will get back in touch with you.

Eileen



Paparoa Community Library

(Behind the Medical Centre)



Opening hours:

Monday & Wednesday 2pm - 4.30pm
Tuesday 10am - 1pm
Thursday 10am - 4pm
Friday 11am - 1.30pm
Saturday 10am - 12midday

Out of hours books can be returned to the returns box inside the door to the right at Skelton's Drapery.

Library Manager 09 431 7555 (During library hours)



OCS October News

Days are getting busier around the community house of late; financial mentor Mike is running a Dancing Dollars course. "What is this?" you ask. People often say that the dollars just keep dancing out of reach. This group gets together on Wednesdays for a couple of hours to do what they can to sort out this issue. Come along, enjoy a free meal and see if we can help in any way with tips and hints to keep the dollars where you need them - in your pocket! (Details below.)

Also, at the Community House we began our 6-week Decider Skills course on the 18th September, and it continues until the end of October. The next course will be advertised in plenty of time so you can come along. This is run by Social Worker Karen and Parent Coach Gail. It is designed to teach children, young people and adults, skills to recognise their own thoughts, feelings and behaviours, allowing them to monitor and manage their own emotions and mental health. The skills were designed to enable people to make effective changes to help manage stress, regulate emotion, increase mindfulness, promote effective communication and help to live a less impulsive life.

The mini-bus continues to go to Whangarei twice a month. This regular event is to make life a little easier for you to get to town, perhaps a coffee, lunch, grocery shopping, or just enjoy the sights and sounds of the city for a change. We take care of the driving and parking.

Our services are in steady demand which keeps the clinical team busy. Whilst we are all part-timers, our practitioners have full schedules but - the waitlist moves fairly quickly.

October Diary:

Community lunch: Wednesday 16th at the Good News Church. All welcome.

Dancing Dollars: Every Wednesday until further notice: 11-1 the Community House 155 Hurndall St

Free mini-bus trip to Whangarei: Tuesday 8th and Wednesday 23rd. Leaving Retirement Village carpark 9am, returning to Maungaturoto after lunch.

The next Decider Skills course to be advertised on OCS Facebook page and shared to groups.

Take care of yourselves
From all at OCS

Painter & Decorator

Tradesman's quality work guaranteed



- Interior
- Exterior
- Spray finishes
- Roofs
- Waterblasting

For your free quote
call Mike 021 529 025



ASSET
CHARTERED ACCOUNTANTS

Asset Chartered Accountants Limited

Tessa Laurence

tessa@assetca.co.nz

0220957665

Unit 2, 1994 Paparoa Valley Road, Paparoa



Business and Home Computer Support

Business Support including:

- Proactive maintenance and support
- Hardware supply & maintenance
- WIFI design, setup and fine tuning
- Printer supply, setup and support
- Backup and Disaster Recovery planning
- Web Hosting
- Office 365 / Azure setup and migration
- Antivirus/firewall TDR EDR

Home Support including:

- Computer upgrades and repair
- New computer supply and data migration
- Setup cloud and local backup
- Smart TV setup
- WIFI design and configuration
- Printer Supply and setup
- Antivirus and security advice
- Friendly, straight forward approach.

Kaipara IT - Making it Easy

Contact Wayne

email.support@Kaiparait.co.nz

Ph 0800 2network (0800 263896)

or 0226485713 www.kaiparait.co.nz

Climate Resilient Communities Fund

Kia Manawaroa Te Taitokerau!

Building resilient communities in a changing climate

The Climate Resilient Communities Fund supports projects that help Northland's most affected communities withstand our changing climate.

Community organisations can apply for between \$5,000 plus GST and \$40,000 plus GST for projects that build resilience in Te Taitokerau.

Funding is available for projects that:

- Build capacity and scale-up regional resilience initiatives, raise awareness, and strengthen local connections and participation in action.

- Support programmes that drive transformational change for community and tangata whenua climate resilience.

- Take action under one or more of four priority impact areas: Food resilience (Te Kai); Water resilience (Te Wai); Energy resilience (Te Ngao); Nature-based Resilience (Te Taiao).

Applications close on 29 October. Apply here:

<https://www.nrc.govt.nz/environment/climate-action/climate-resilient-communities-fund/>



W.J.BARKER SCAFFOLDING

A local scaffolding service for any renovation, painting, new build, roofing & access requirements.
Call anytime for an estimate.
0204 186 8964
09 280 9520

www.wjbarker-scaffolding.co.nz
info@wjbarker-scaffolding.co.nz

BOOKS AND BOOKCLUBS

My neighbour gave me two books by Philippa Gregory, "The White Queen," and "The White Princess". I haven't read any of her books for a while, she is most noted for historical fiction. I have watched the TV series, including "The Other Boleyn Girl," and I was glad I had because it helped me keep up with who was who and what was what in the books. If only the English kings and queens had come up with names other than Elizabeth, Mary and Catherine, or Edward, George and Henry, it would be a whole lot easier for us to follow. I wonder how much superstition and witchcraft played a part in moulding history. I suspect a whole lot more than is portrayed in novels. Enough truth involved to keep us guessing. I try to include something of interest to men, but this month is all for the girls, sorry, and I know there are a few retired nurses out there who will love this autobiography, "Not Your Average Nurse," by Maggie Groff. Family history, friendships and romances are sprinkled throughout as a background to the "collection of funny, sad, troubling, touching and occasionally



shocking stories" gained throughout her nursing career. Training at Kings Hospital in London in the 70s, she went on to nurse through a variety of wards in various English hospitals, work places, private patients, Switzerland and Australia, in an Aboriginal Reserve, an Island Resort, and the Sydney Opera House. Being not just a little rebellious she managed to create a modicum of havoc along her way. Something ridiculous for the younger women and the young at heart, Sophie Kinsella's "The Party Crasher". Dad in his mid-life crisis has thrown Mum out and taken up with a younger model. The family home is up for sale, along with all their childhood memories, and the children, now grown up with lives of their own, are not happy to be witnessing the end of a happy, blissful era. The new woman, an unfeeling gold-digger, throws a farewell party to the house. One daughter takes umbrage and refuses to attend, but then realises it is her last chance to rescue some of her personal treasures. She comes up with a plan to sneak into the house while everyone is busy with the party, grab her stuff, and make a quick get-a-way. Of course nothing goes to plan and while hiding under tables and in cupboards she overhears some very interesting conversations! Good for a laugh with warm fuzzies included.

And now for one of the saddest books I have ever read. I know I am a softy, but I warn you, tears will be shed. "The Things We Cannot Say," by Kelly Rimmer. The inability to speak is not for reasons you might expect. Grandma has had a stroke, and her great-grandson is mute and autistic and they communicate via an app on an i-pad. Alice, the boy's mother is caught in the middle. Wanting to fulfil her Grandma's last wishes, she returns to Poland in her place, and so the story unfolds of a love destroyed by the Nazi occupation, the horrors of those years, the escape to America and the subsequent, life-long consequences. Along with this is the story of Alice's own struggle raising her son, whom she loves exactly as he is, and balancing his needs along with those of her highly intelligent husband and daughter, her mother, and now her dying grandmother. Heartbreaking.

Anne Bate

FARMWORK SERVICES

For all types of fencing, stockyards, handyman work, tree felling, tractor work etc.



phone
Mike 09 431 6509
027 203 2694
email
farmwork.services@gmail.com

12 tonne digger now available
for driveways, farm tracks, hole boring etc

CROMPTON ENGINEERING LIMITED

Design and General Engineering



Floodgates | Field Rollers | Levelling Bars | Palm Kernal Trailers | Hay Racks | Head Bails | Forks | Incinerators | Kumara Handling Equipment | Sliding Palm Kernal Storage Bin Cover



We also stock – Pumps & Pressure Systems | Bolts & Nuts | Pipe Fittings | Bearings | Drive Shafts

Visit our website | www.cromptonengineering.co.nz

31 Jellicoe Street, Ruawai 0530 | Ph (09) 439 2393 | email crompton.eng@xtra.co.nz

Paparoa Volunteer Fire Brigade Join our team

It's Life
Changing

Contact Ken Ogilvy
021 129 4042



Watch out for bittern!

Bittern are increasingly being struck by cars on our roads and in the latest incident an adult female bittern was killed on Pouto Road at the end of August.

Australasian bittern/matuku-hūrepo are a threatened nationally critical species, so the bird was taken for a necropsy (an animal autopsy) to help provide more information on these secretive, rare birds.

This bittern turned out to have a stomach full of over 50, mostly juvenile, skinks. This indicates that bittern are drawn to roads, where skinks are prevalent, for an easy meal.

Bittern are found throughout New Zealand, as well as in Australia and New Caledonia. A radio-tracking study on 10 adult male bitterns in the Hawke's Bay showed that birds visited wetlands, within a 15km radius. They visited raupō-fringed lakes, spring-fed creeks with cover, paddock/drain edges and wetlands. They can travel long distances. Radio-tracking studies in Australia have shown that bitterns can move over 550km within a very short space of time (11 days). However, radio-tracking studies here suggest the furthest a New Zealand bittern has travelled (2017) was 140 km.

An adult bittern will grow to around 74cm tall so they are a large bird.

The female is mostly silent whereas the male has a distinctive "boom", mainly around breeding. If you live near a waterway or wetland have a listen at dusk and listen out for a series of up to 10 booms - they're not loud but have a resonance.



Bittern numbers in New Zealand declined greatly following destruction of 90% of their wetland habitat to create farmland and towns. Ongoing habitat loss is still considered one of their greatest threats, although predators,

poor water quality, and reduced food availability may have contributed to population declines. There are currently thought to be less than 1000 bittern in NZ.

Unfortunately, because bittern look for food along the road edge they are increasingly likely to be hit by cars. Bittern "freeze" when they sense danger and are



often difficult to spot due to their camouflage.

A cross-agency response is working to reduce the risk to bittern on our roads by installing "Slow for Bittern" signs in areas where there is wetland habitat near roads. In September the road team from Fulton Hogan installed new signs on State Highway 12 following collaboration between NRC, DOC Kauri Coast and KDC.

The signs are on SH12 on the Parore to Maitahi section, where two bittern were killed in 2023, so look out for the signs if you're heading up that way, but more importantly, look out for bittern!

If you see bittern, you can report your sighting using online. Data from reported sightings will help NRC and other agencies to understand the species presence in Te Taitokerau. You can find the reporting tool and lots more bittern info at: www.nrc.govt.nz/bitterns

Al's Upholstery

Alan Hilton



Automotive
Furniture
Covers
Seats

over 30yrs experience

021 0709101

144 Franklin Rd, Paparoa

White Rock Gallery



**Kaipara
art & craft**

OPEN 7 DAYS 10am-4pm

5 Church Road, Matakohē
next to the Kauri Museum

There's something for everyone



Kaipara WellBeing Hub

Oct 12th - 1.30pm-4.30pm

KaiparaHUB@proton.me

Guest Speaker

Gregor Robinson - Healer

Bushlore Herbal Co <https://bushlore.co.nz/>



Natural Practitioners
Food - Products For Sale
Wellbeing Information
Abundance Table

KaiparaHUB@proton.me Paparoa Sports Pavilion - Paparoa

Paparoa Store

Proudly Supporting Paparoa

OPEN 7 DAYS

Monday-Sunday 7am-7pm,



We stock a great selection of

CONFECTIONERY, ORGANIC, DELI, MEAT,
FRUIT, VEGES, FROZEN GOODS, BEER, WINE
and a wide range of grocery items at excellent prices

EFTPOS NZ HERALD POST CENTRE

Phone / Fax 431-7320

Cnr. Franklin Road and State Highway 12

ADAM STEVENS

BUILDER

Licensed
Building Practitioner

For new builds,
alterations and roofing

021 741 363 A/H 09 431 6245

KMU SURVEYS LTD

MAUNGATUROTO

Ken Urquhart

Licensed
Cadastral
Surveyor

09 431 8705

021 161 2344

kenurquhart@xtra.co.nz

Unichem
Orrs Pharmacy Maungaturoto



Don't forget -
if you are unable to collect
your prescriptions from the
pharmacy we can deliver daily to
Paparooa, Matakohu and Tinopai
confidentiality assured

For all your health and
beauty needs at competitive
city prices and with
friendly country service

Enjoy the benefits of shopping locally
and save petrol - we are worth the visit!



SHOPPING THAT'S TWICE
AS REWARDING.

144 Hurdall Street, Maungaturoto

Phone (09) 431 8045

Fax (09) 431 8808

maungaturoto@orrs.co.nz

Open Monday to Friday 9am - 5pm

g.a.s.
Petrol Service Stations

Paparooa
Open 7 days
Mon-Sun 6am-10pm
gasolinepaparooa@gmail.com

- Petrol, diesel & oil
- Fresha Valley milk
- Pies
- Barista coffee
- Great variety of snacks
- Pet food - cats/dogs
- Cop-Rice biscuits 20kg
- Great variety of bait and all fishing requirements
- Top ups & prepay
- Frozen foods
- Firewood
- Hardware
- TRAILER HIRE



Phone
09 431 6302

Maungaturoto Primary School & Districts

150th Jubilee 19th Oct 2024

PROGRAMME

9.45 AM	Meet in Gorge Rd carpark for Powhiri
10.00AM	Powhiri begins Official speeches, cake cutting and tree planting
11.00AM	Pet Judging begins
11.30AM	Decade Photos begin (for registered participants only). Classrooms open for viewing
12.30PM	Snail Race Finals
1.00PM	Pie Eating Competition
1.30PM	Grand Parade and Prizegiving
5.00PM	Bar opens at Country Club
6.00PM	Jubilee Dinner

Information for the Day

Parking - Weather Permitting will be available on the school field. Entrance via school bus bay off Hurdall St.

Disabled Parking is available in the Gorge Road School Carpark. Please respect this space and leave available for Disabled Parking.

Pick up / drop off at the front entrance of the school on Gorge Rd.

Registrations - Please pick up your registration packs from the Multi Purpose Room after the conclusion of the Powhiri. Photo displays and cafe can also be found in the Multi-Purpose Room.

Food - Food & hot drinks will be available in the Cafe in the Multi-Purpose Room. Please see complimentary voucher in your registration pack. Food is also available from the Lions Caravan and PTA BBQ on site.

NO EFTPOS WILL BE AVAILABLE DURING THE DAY

Pie Eating Competition - Real Town Pies will be running their annual Pie Eating Competition on this day. There will be 3 categories:

Junior - 11yrs and under; Adult - 12 years plus; Senior - 60 Year plus (age on the day)

Entries: There are limited spaces for this event. To enter fill in the form at the MPS school office or Private Message via facebook - Maungaturoto Primary School PTA.

Stalls - A small variety of community groups will be selling their wares on the day as well. The Year 5 & 6 camp fundraising group will have activities / games running. Our Family Favourites cookbook, tea towels and calendar will be available to purchase on the day.

GROW WHAKATIPU Paparoa Inc

We would like to extend a big thanks to all those who attended our AGM last month. I'd like to give a brief overview of our last financial year in this article. It's often hard to quantify what our small band of regular volunteers do but the AGM highlights the quantities of vegetables and fruit that has been produced over the year. For example, between April 2023 and March 2024, 309 lettuce were picked along with 101 beetroot, 50 cabbages, 90 bags of plums and 117 bunches of rhubarb to name but a few. Of course not every year is the same and we've had a couple of vegetables fail to thrive; we only had three onions and cauliflowers during this time period. The quantities of produce that we supply to Otamatea community house mean they are able to supply up to 550 food parcels a year with fresh produce. Additionally what is supplied to the high school feeds between 4 and 6 families a week (during term times). Sometimes everyone wonders if putting in the effort is worth it and hearing these kinds of figures really reassures us that it truly is. Of course none of the growing that we do would be possible without the generosity of Rowie Panhuis from Salt River Nursery or Bulbs Direct who both supply us with seedlings and seed potatoes.

From March this year, we welcomed some of Paparoa Primary School's senior students to work with us regularly. The children work alongside our regular volunteers and take back what they learn to their peers to aid them in their garden to table system. They work very hard in the gardens and have been a pleasure to work with.

Aladdin's Cave reopened mid November 2023 and is a vital part of our fundraising efforts. We are really pleased that it has been doing very well in the new garage especially since we can now open in all weather conditions. Many individual's help went into creating what we now have and we are ever grateful to all who have put their time, expertise and energy into making it what it is now. This includes all of those who make donations on a Saturday and our customers.

There are so many people involved in making this community garden work that it would be impossible to mention them all. You know who you are and we thank you for it.

It is hard to believe that winter is over and we are welcoming spring in. We hope that everyone's gardens are doing better than our cauliflowers did last year!

Katie Fullerton

Paparoa Toy Library

Come and visit us and see our amazing collection of toys to borrow.

\$10 a term for subs.

\$2 for big bikes or toys with batteries in them.

50 cents for the rest of the toys.

Wed 10.30-1pm, Paparoa Community Church, Hook Rd.



REX BROWNE CONTRACTING

- Limestone & Metal Cartage
- Truck & Digger Hire
- Farm Roads
- Earthwork & Dams
- House Sites & driveways
- Wrapped Silage & Hay
- Cultivation
- Fencing & Mulching

**Maize
Silage
planting &
harvesting**

☎ 09 431 7556
☎ 021 720 590

LATTO BUILDERS

021 7727 66

**House Construction, Alterations
Renovations or General Repairs**

Battensby Brothers Contracting Limited

www.battensbybrothers.co.nz

Call to book us now for ...

- ◆ **Ground Cultivation**
- ◆ **Silage and Hay**
- ◆ **Fertiliser spreading**
- ◆ **Firewood (WINZ approved)**



Contact Glenn on 021 983 734

Email: battensbybrothers@xtra.co.nz

BETTER CONTAINERS

Rent Spacious & Secure Containers Today!

Need extra space? Our 10 & 20 ft storage containers in Maungaturoto are the perfect solution!

- One use containers
- Safe, weather resistant
- Easy one handle door opening
- Extra ventilation
- Store your belongings with peace of mind
- Lockbox padlock
- Ideal for personal or business use

PHONE GARY 021 902 087



Kyle
021 1376353

Glass and glazing needs, cat doors to caravan windows. Winz quotes available. Great rates, mobile eftpos.

Linking Hands

You never know when you'll need them...

Linking Hands health shuttle services rely entirely on donations, grants and volunteers to operate.

Without this help they would not be able to continue to help the community get to their much needed health and well being appointments. They are still running their vehicle replacement fund to keep their fleet of vehicles up to a high safety standard.

They have a givealittle page, or scan the QR code to make a donation.

<https://givealittle.co.nz/org/linkinghandsinc>



Food Rescue

A full puku is a happy puku

Recently I was lucky enough to visit 155 Whakaora Kai, a food rescue charity in Northland, who collect quality food destined for landfill and share it with community organisations across Taitokerau.

Kai is precious, and should never be wasted, and so is our planet. 155 Whakaora Kai are on a mission to reduce methane emissions by preventing food waste. They do this by partnering with growers, suppliers and retailers across the Northland region, collecting surplus food and giving it to more than 80 organisations who share it with their communities. This includes foodbanks in Maungaturoto and Kaiwaka.

They also work with Whare Kai, a social supermarket that operates in Whangārei. With the support of Food Stuffs North Island, Whangārei whānau in need of kai are allocated points to spend and can select what they need rather than receiving pre-filled food parcels.

Every year 2,600+ shopping slots are filled at 155 Whare Kai.

Food facts:

- 30% of all food produced goes to waste.
- 8% of global greenhouse gas emissions come from food waste.

Every year at 155 Whakaora Kai:

- 43 tonnes of food is rescued from landfill.
- 121 tonnes of food donated for Taitokerau families.
- 80+ organisations receive rescued food.
- 188 tonnes of food is distributed.

- 535,000 meals are created from rescued food.
- 47 tonnes of carbon emissions are reduced.

At 155 Whare Āwhina:

- 1300+ Requests for legal support received.
- 300+ Housing needs assessments completed.

155 Open Arms:

All their facilities and services are available free of charge, and include:

- Breakfast and lunch six days a week.
- Awhi Whānau and Housing support.
- Postal address.
- Showers & bathroom supplies.
- Washing machines.
- Lockers.
- Pātaka kai.
- Every year 9500+ Visitors are welcomed.

Great mahi by great people.

Margie



Protect

your families tomorrow.



Donna - 027 5857776



info@urcovered.co.nz

WE SPECIALISE IN...

ACC
Cover Plus
Cover Plus Extra
Income Cover
Trauma Cover
Health Cover
Life Cover
Mortgage Cover



URCOVERED
Discussed, Personalised, Managed, Insurance.



Consent granted for solar farm

Independent hearings commissioners have granted an application by Meridian Energy Limited (MEL) to build a multi-million dollar 172-hectare solar farm across three sites at Marsden Pt, Ruakākā.

The company had applied to the Northland Regional Council for resource consents for earthworks, associated stormwater diversion and discharges and vegetation clearance for the farm. (Land use consent for the solar farm was granted by the Whangarei District Council in February this year.)

In their recently released decision granting the requested consents for 35 years, the commissioners said MEL had been looking for an opportunity to establish a solar farm in Northland to improve the resilience of both regional and national energy supply.

"This culminated in the

purchase of three sites at Marsden Point, and the consenting and construction of a Battery Energy Storage System (BESS) on the northern-most site (corner



Rama Road and SH15) as the first stage of the Ruakākā Energy Park."

Two hundred thousand solar panels would be installed to construct the 100-150MW farm which would produce 150-200GWh of electricity annually.

NRC

Mullet Festival

Pahi Boating & Fishing Club

11th - 12th October

One net per boat, MPI rules apply.



Prizes for heaviest mullet, fattest mullet, best looking mullet (hair).

Licensed bar (no BYO), hot food available.

Starts 4pm Friday October 11th, weigh in before 4pm Saturday 12th October.



Tickets \$30, available from GAS Paparoa, Maungaturoto Mechanical Services, Paparoa Store, or from the club.

Paparoa Golf Club

2024

Mixed Open Tournament

Men and Women's Divisions

Sunday 13th October

Tee off time ~ 10am

Cost per person \$35 includes meal

For further information contact:

Jas Futter Club Secretary on: 0226781474 or jasfutter14@gmail.com



DENTURE CARE

Repairs and adjustments

Maungaturoto local

Decades of experience

All work done in-house

Same day or next day service

phone: 0274 942 674

boident@xtra.co.nz



Rhoda Morrison

Consistent Award Winning Salesperson

20+ years in the industry

0274 800 691

09-431 6912

rhoda@fnkaipara.co.nz

www.roperandjones.co.nz



first national
REAL ESTATE | Roper & Jones

Dargaville Realty Ltd

Licensed REAA 2008

Paparoa Motor Camp

CABINS | TENTS | CARAVANS | MOTORHOMES

17 Pahi Rd, RD1, Paparoa, Northland. Ph: 09 431 6515 Email: paparoamotorcamp@xtra.co.nz



Set in a quiet rural area, within easy walking distance to picturesque village with shopping facilities, a general store & post office, service station, restaurant, friendly country pub, takeaways, café, gallery, bush walks. Only 6kms to the Matakoho Museum.

www.paparoamotorcamp.co.nz



Self Contained Cottages
Cabins with TV
Tent and Campervan sites

Contact

09 431 6515

Cnr SH12 and Pahi Rd

Lemon noodles

There are still plenty of lemons around so this will get rid of one for you! And it's delicious!
Perfect with fish, chicken, or just on its own.

Ingredients:

500g spaghetti noodles
120g butter
500ml sour cream
Juice of a large juicy lemon
1 tblsp fine lemon zest
Freshly ground pepper
Chopped parsley
Parmesan cheese to taste

Method:

Preheat oven to 200C.

Cook the noodles in boiling water, drain and put in a baking dish.

Melt butter in a small saucepan then remove from heat.

Stir in sour cream, lemon juice and zest.

Pour this over the noodles and mix together.



Bake for 20- 25 minutes.

To serve, sprinkle on freshly ground black pepper, chopped parsley and parmesan cheese.

Toss together and eat.

Serves eight as a side dish.



Science Corner



Fascinating Glass Frogs

Hyalinobatrachium fleischmanni - (what a name!) from Central America.

- These frogs live in forest canopies high above flowing streams where they lay their eggs. They live on small insects and only come out during mating.
- They are very small- up to 2.5 cm in size- are bright green on the top, camouflaged with the same colour as the leaves and underneath are a reddish colour.
- When they go to sleep they hide under the branches and somehow manage to remove the reddish colour of their blood by storing all their blood in their liver which makes them invisible. Its like packing up all your blood into a lunch box while you sleep. Their blood is red because it contains oxygen carrying haemoglobin (like us). You would expect it would form a blood clot but it doesn't.
- Scientists do not know how they do this or how they survive with no blood flowing.
- Unfortunately, they are threatened by deforestation and climate change.
- Nature again is truly wonderful.



Stella



ROGER BULL
OSTEOPATH

now working from:

The Yoga Barn, Mangawhai;
& Maungaturoto

pain
injury
infants
health recovery
general wellbeing

To book text Roger: 021 234 0226

Pets in the Valley



I have been travelling around a bit lately and its given me a chance to observe lots of different people out and about with their dogs. For a single species the variety of forms dogs come in really is astounding I'm sure no other species can match them. Anyway I guess that is part of their appeal there really is a model for everyone although sometimes you can see people that have the wrong one for them.

I saw an elderly couple struggling along with a highly charged springer spaniel- which looked like an accident in the making and no fun for any of them. Hopefully they were just looking after it for the weekend!

I saw an elderly man on an e-bike that had a little seat on the bar with a little terrier sitting in it- how to get out for some fresh air without too much exertion! The number of dogs being pushed in pushchairs or pulled in little carts was quite intriguing - I'm not sure who benefits.

Anyway after watching dogs playing in a little dog park in Paris, it's nice to know that dog language is international. They all understand each other even if the owners don't!



On a side note, I didn't see a single fat dog in Paris whereas they are everywhere in New Zealand- reflective of society? Anyway its great to see people out with their dogs wherever they may be and now it feels like summer is coming it all gets so much easier.

Take care, Janine

October in the Garden



October must be the best time to be in the garden. Daylight saving gives us that extra hour of evening light. There's so much to see now and the gardens have not been plagued by too many pests.

Beetroot, broad beans, carrots, celery, lettuces,

peas, radishes, rocket, spinach and spring onions can all be sewn direct. Keep planting brassicas but protect them from the hungry white butterflies. Sow pumpkins, zucchini, cucumbers, gherkins, eggplants, basil and beans. Sow corn, tomatoes and melons towards the end of the month or when the soil has warmed.

It's a great time to repair patchy lawns with some new seed ready for summer.

Early berries will be appearing so protect them from the birds with netting.

Give all your fruit trees some manure (most of us have plenty of that or know someone with chickens, cows or horses) just keep the manure away from the base of the tree.

BORAGE - loved by bees! And always in our vege and flower beds. Did you know both the flower and leaves are edible? They have a fresh cucumber

taste. Scatter in salads, add chopped leaves to egg and mayo sandwiches, or to plain yogurt along with cucumber, spring onions and coriander to make



a raita. Larger leaves can be cooked like spinach. Flowers are beautiful in ice cubes or on baking.

TOMATO TIPS. Once a plant is established remove base leaves. Remove laterals as they grow. A handful of sheep pellets in a watering can is a wonderful feed once a week. Water plants daily (but not the foliage). Give them banana tea (banana skins in water) once a week. A teaspoon of Epsom salts in the soil when you plant gives them a boost. Plant them deeply to protect them from the wind.



Let tomatoes self seed. Fish guts, heads and skeletons can be collected and stored in a bag in the freezer, then dump them in

the soil and plant on top. Stake your plants well. Comfrey leaves make a great tea or cut up and add to the soil. Give the tomatoes space to grow - you will get a bigger yield from a few well tended plants.

I hope everyone gets out in the garden this month but for those who don't garden our local Paparoa market has beautiful homegrown veges every Saturday and we have the "Sustainable Swap Paparoa" Facebook page where excess produce (and services) can be traded.

Tell me what things you want to know. Is it what to plant? Soil health? Compost? Reuse/recycle? Flowers? Maybe a recipe from seasonal produce?

Happy Gardening
Smiles, C

Need a Shed?



- Timber and steel buildings any size
- We do plans and engineers designs for council
- Farm sheds
- Commercial buildings
- Feed pad shelters
- Goat/Chicken sheds
- Horse stables
- Lifestyle sheds
- Excavation, driveways and concrete floors

Your local builder: Andre Nicolai 021 202 9854

**Paparoa
Medical Society**

AGM

**Sunday 20th
October, 4.30pm**

Paparoa Hall

All welcome

Local JPs

Robyn Skelton, Paparoa
4317306 or 0272922787
Business hours only

Val Faulkner, Paparoa
021687226
Evenings and weekends

Graham Withers, Tinopai
2809552 or 02102545799

Derek Birt, Mareretu
4316847

WHAT'S ON - OCTOBER 2024

The Kauri Museum - open 7 days, 9am-5pm.

White Rock Gallery - 5 Church Rd Matakoho (Kauri Museum) Open 7 days 10 - 4

Paparoa & Surrounding Districts Business Showcase - Sat Oct 12, 1-5pm.. Paparoa Hall. See back page for more.

Pahi Boating & Fishing Club Mullet Festival - Oct 11-12, 1.30-4.30. See p15 for more details.

Kaipara Wellbeing Hub - Sat Oct 12, 10am. Paparoa Sports Pavilion See ad p11 for contact info.

Paparoa Golf Mixed Tournament - Sun Oct 13, 1.30-4.30. See p15 for more info.

Maungaturoto Primary School 150th Jubilee - Sat Oct 19. See p12. Enquiries to the school.

Paparoa Medical Society AGM - Sun Oct 20, 4.30pm. Paparoa Hall.

Paparoa Golf Club has a new facebook page replacing the old defunct page which is no longer active. The name of the new page is "Paparoa GOLF". Please give it a like so you keep up to date with everything golf related that is happening in and around the district.

OUT & ABOUT AROUND TOWN

Paparoa's Farmers Market Happens every Saturday morning, 9am - 12 at the Village Green. Fresh fruit & veges, sweet treats, plants, fish, eggs, assorted crafts, live music and so much more. A great place to catch up with friends or make new ones.

Artisan & Collectibles Market Quarterly. Paparoa Memorial Hall 10am-2pm. Next market 8th December. Email artisanmarket.paparoa@gmail.com or ph Steph 027 452 7124 or Ruth 021 433 969.

Grow Whakatipu Paparoa Drop in for a chat, hands on experience, or a cuppa. Every Thursday & Friday 9am- 12pm. Next to the showgrounds.

Paparoa Golf Course Winter Sunday golfing. 18 holes (\$20) tee off 10am, 9 holes (\$10) 1pm. Includes food afterwards. Enquiries to club secretary on 022 678 1474.

Paparoa Beats 88.3fm Community radio based right here in Paparoa. A "Beautiful Resistance" to the mainstream. Also available online at paparoabeats.radio12345.com. If you would like to get involved and play your own tunes you can contact them on paparoabeats@gmail.com.



Paparoa Press Needs You!

Things happen in our little village (and surrounds) but we often don't hear about them until months later...

If you have a story, event, obituary, or news item you think the community should, or would like to hear about - then please, please, send it to us.

We know that there are members of our community doing great things and they should be celebrated.

We can't be everywhere and know that there are many goings-on that simply pass us by so please, please keep us informed.

If you would like to make a regular contribution we'd also love to hear from you.

Email press@paparoa.org.nz by the 20th of the month.

Paparoa and Surrounding Areas BUSINESS SHOWCASE

WHEN: Saturday 12th October

WHERE: Paparoa Memorial Hall - 1pm to 5pm.

Find out what's available in your local area.

It is FREE to attend.

There will be demonstrations, tastings, loads of useful information, gifts to buy, products and services to order and food trucks offering tasty treats.

There's a lot to discover locally. Cottage industries, workshops, training opportunities, garden supplies, pet services, commercial businesses, farming supplies, bespoke food and beverage, construction and engineering, trades, craft and artisan products and much more.

Email paparoa.ca@gmail.com to find out more.

Prize draw at 3pm - be there to win!



We are saddened to hear that local artist, Steve George of Matakoho, has passed away after a long illness. Our thoughts are with Pat and family, and with Steve's many friends.

Condolences to the family of Jim Skudder who recently passed away. He was a member of the Paparoa Volunteer Fire Brigade, a keen badminton player, and well liked member of the community.



REMEMBER!

Either way it's 20k

when passing a school bus picking up or dropping off children.

REGULAR EVENTS, MEETINGS AND ORGANISATIONS

Anglican Church St Marks Hook Road, ph 431 8193 or 431 6224 for services info

Ararua Church 10.30am every Sunday. All welcome Ph 431 6622

Art Studio, Ruawai Wed 10-12noon ph Frances 439 2554

Badminton Thursdays 7pm Paparoa Hall \$2 students, \$3 adults, Pete 021 056 7163

Farmers' Market Every Saturday 9-Noon, Village Green, Alistair, 027 525 4782

Grey Power Last Wed in month, 1pm, Anglican Church Hall, Maungaturoto

Grow Paparoa Thur/Fri 9am to 12pm at the Community Gardens

Holy Trinity Anglican Church, Maungaturoto, All welcome. Ph 431 8193 for services information.

Kaipara Marching Team Weds 4-5.30pm, M'gto, Ph Lyn Hutchings 022 070 8674

Line Dancing Thurs 10am-noon Paparoa Hall Ph Jackie Cornes 027 368 7298

Paparoa Mah Jong Group 1st & 3rd Tues, Paparoa Hall 1.30-4pm, Sara 021 0774947

Mainly Music Wed 9.30am Paparoa Comm Church, Lynaire Porteous 431 7520

Matakohe Garden Circle 1st Weds each month, 1pm, J Mackinnon 431 6689.

Maungaturoto Opportunity Shop Open Mon, Wed, Thurs, Fri 10am-3pm.

Alternate Sat mornings 10am-1pm.

Maungaturoto and Districts Rotary Club Maungaturoto Centennial Hall,

Tuesday evenings 6pm, Ph Stella 021 149 0877

Otamatea Quilters 1st and 3rd Mon month 10am, Paparoa Hall 09 439 2262

Outdoor Bowls Maungaturoto Green Ph Tony 431 6026 or Brian 431 6884

Pahi Hall available for hire Ph Tina 0210335128

Paparoa Community Church Sundays 10.30am, 4 Hook Road, 431 6795 or Dave Porteous 0274 180 676

Paparoa Box Fit Every Wednesday 6-7pm, Stretching/Cardio/Boxing \$10, Paparoa Hall, Stacey Watson 09 283 9931

Paparoa Dance to Music Every Tuesday 10:30-11:30, Stretching/Balance/Resistance/Bands/Zumba, \$5, Paparoa Hall, Stacey Watson 09 283 9931

Paparoa Garden Circle 2nd Wed of month. Contact Raylee Over 021 2565 893

Paparoa Hall Functions venue Ph Robyn 431 7306 or a/h Loraine 431 7290

Paparoa Library Mon, Wed 2-4.30, Tues 10-1, Thurs 10-4, Fri 11-1.30, Sat 10-12.

Library Manager 09 431 7555 during library hours. Returns Box at Skeltons

Paparoa Lions Dinner Meetings 3rd Mon in month 6.30pm, Sports Pavilion

Paparoa Playcentre Tuesday and Thursday 10am-1pm Visitors Welcome

Ph Kirstin 431 7373 txt 021 525 425 or Jane 431 6148 paparoa@playcentre.org.nz

Paparoa Primary School 2024. Term 2 ends 5 July, term 3 starts 22 July, ends 27 Sept, term 4 starts 14 Oct, ends 13 Dec. Ph 431 7379

Paparoa Toy Library Wed 10.30-1pm, Paparoa Comm Church, Hilery 431 7330

Paparoa Volunteer Rural Fire Force (VRFF) 1st and 3rd Monday of the month 6.30pm Depot Rd ph Ken Ogilvie 021 129 4042

Plunket Ready Steady Wriggle Mon 10am Sports Pav. Tina Ball 021 033 5128

Selwyn Centre Thurs 9.45am for over 65's, St Marks, Hook Rd, Ph Sue 431 6224

Sports Pavilion Functions Venue Bookings ph Jane Bailey 431 6148

St Mary's Catholic Church Maungaturoto 10am Wed, 4pm Saturday

Table Tennis Tues 7.30pm, Sports Pavilion \$2 Pete 021 056 7163

Tennis Tues Junior from 4pm, Adult 5.30pm, Ph Sue 431-6224, Pete 0210567163

Yoga For Everyone Tues and Fri, 9.30am, Sports Pavilion. Hatha yoga & more. \$15.

Equipment provided. Beginners welcome. Ph Luciana for more info 0221896496

PLEASE UPDATE US WITH YOUR DETAILS: press@paparoa.org.nz

Paparoa Press CLASSIFIED ADVERTISING

Storage Available

In Paparoa: Secure 20 foot Containers - contact

Gary Dallas 021 431 712

Paparoa County Depot Trust



Firewood For Sale

Split and dry. \$90m³

Local delivery to Paparoa and Maungaturoto, or pick up.

Phone Troy on 021 0809 7537

**Buy Local
Support Local**
Help your community thrive
and businesses survive

LOCAL TIDES for October 2024

TIDES - CALCULATED for PAHI-WHAKAPIRAU

DATE	LOW	HIGH	DATE	LOW	HIGH
1st	17.08	11.18	17th	17.27	11.35
2nd	11.50	11.50	18th	18.12	12.19
3rd	18.11	12.20	19th	6.36	13.04
4th	6.28	12.49	20th	7.21	13.48
5th	6.58	13.19	21st	8.07	14.34
6th	7.29	13.49	22nd	8.54	15.24
7th	8.08	14.21	23rd	9.46	16.20
8th	8.38	14.57	24th	10.44	17.28
9th	9.19	15.42	25th	11.54	6.02
10th	10.11	16.42	26th	13.13	7.17
11th	11.18	18.00	27th	14.23	8.27
12th	12.37	6.40	28th	15.16	9.23
13th	13.54	7.57	29th	15.59	10.07
14th	14.58	9.03	30th	16.36	10.44
15th	15.52	9.59	31st	17.10	11.18
16th	16.40	10.48			

Community Directory

EMERGENCY: FIRE ■ POLICE ■ AMBULANCE dial 111

COAST TO COAST HEALTH CARE

Maungaturoto Medical Centre: 8am-5pm Mon-Fri 09 431 8576

Paparoa Clinic: Open Tues and Thurs 8am-5pm..... 09 431 7222

For urgent after hours medical service (Wellsford)..... 09 423 8086

DISTRICT NURSE Dargaville Hospital 09 439 3330

Healthline - 24 hour service..... 0800 611 116

HOSPICE KAIPARA Dargaville Hospital 09 439 3330

KAIPARA DISTRICT COUNCIL Helpline 0800 727 059

Mangawhai Office..... 0800 100 388

KAIPARA PHYSIOTHERAPY Lyndsay Bargh/Lynne Rhodes... 09 4391656

LINKING HANDS Health Shuttle Service, Maungaturoto. 09 431 8969

LIONS CLUB PAPAROA President Ken Chambers 09 4317443

MAUNGATUROTO PHARMACY 09 431 8045

MAUNGATUROTO REST HOME 09 431 8696

OTAMATEA COMMUNITY SERVICES Community House 09 431 9080

PAPAROA LIBRARY Free Membership. Ph 09 431 7555 (Bus hours)

Mon, Wed 2-4.30, Tues 10-1, Thurs 10-4 Fri 11-1.30, Sat 10-12

PAPAROA PLAYCENTRE paparoa@playcentre.org.nz

PAPAROA PLUNKET .Plunket Nurse Louise 027 2823987 or 09 438 2508

PLUNKET Helpline 0800 933 922

PAPAROA PRIMARY SCHOOL 09 431 7379

PROGRESSIVE PAPAROA INC (PPI) Pete Hames 021 0567163

PARENT PORT Inc. free help for families Linda 09 425 9357

PROGRESSIVE
PAPAROA

**Paparoa and
Surrounding Areas**

BUSINESS SHOWCASE

Saturday 12th OCTOBER

Paparoa Memorial Hall - 1pm to 5pm.

Come along and see what's available in our community
Over 30 businesses will be offering their trades,
services and products. A fun event for all the family!

FREE ENTRY

GIFTS - TASTINGS - FOOD - ARTS - WELLBEING

SHOP LOCAL COMPETITION

\$500 Prize!

Prize draw at 3pm

**Be there to be
in to win!**



Find out more
email paparoa.ca@gmail.com



**TRADES
SERVICES
DEMONSTRATIONS
WORKSHOPS**

See the list of businesses participating in the Shop Local here
<https://paparoa.org.nz/events/business-showcase>

